

MSUD DOUBLE VALVE PLUG FORM BI 11MM

PUR 4X0.75 GRAY, UL/CSA, drag ch 10m

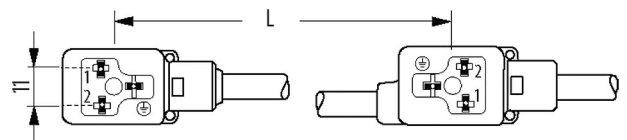
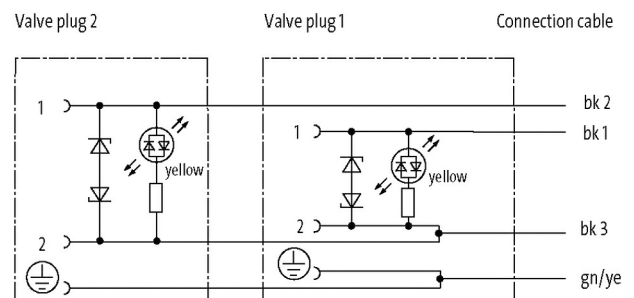
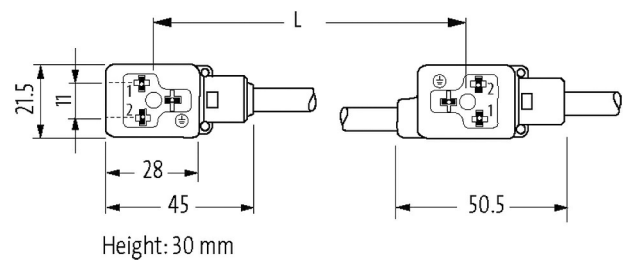
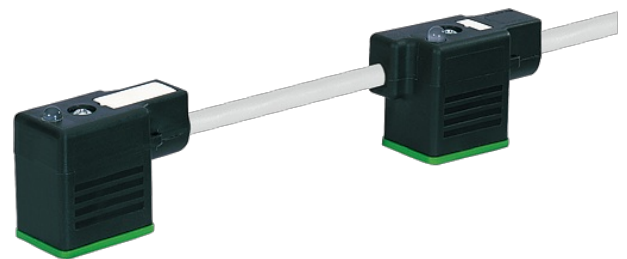
MSUD

Form BI 11 mm

24 V AC $\pm 20\%$ / DC $\pm 25\%$

LED

= 150 mm

[Link to Product](#)**Illustration**

Product may differ from Image

cCSAus

* UL/CSA

Form

Form	58121
/	4 × 0.75 mm ²
	PP (, , /)
C-track properties	10 Mio.
	PUR (UL/CSA)
	6.5 mm ±5%
	10×
	-40...+80 °C
	-25...+80 °C
	237
	3 (PUR)
()	cRUus (AWM-Style 20549/10493); CE conform
[g/m]	69,30
()	max. 26 Ω/km (20 °C)
()	0.15 mm
()	42 × 0.15 mm (6)
	4 × 0.75 mm ²
AWG	AWG 18
	PP
	CFC
	70 ±5 D
	1.85 mm ±5%
/	
	4
	no
	PUR
)	CFC
Shore hardness (jacket)	90 ±5 A
()	6.5 mm ±5%
()	
	(EN 60811-404)
	300 V AC
	2500 V AC
	DIN VDE 0298-4
	-40 +80 (+90 10 000)
	-25 +80 (+90 10 000)
	5×
	10×
()	max. 10 Mio. (25 °C)
()	max. 3 m/s
()	max. 10 m/s ²
	±180°/m
	max. 2 Mio. (25 °C)
	35
	24 V AC ±20% / DC ±25%
	max. 4 A

	max. 55 V
	max. 20 ms
LED	()
	12 mA
	,
	M3 (0.4 Nm)
	IP67 EN 60529
	0.8 kV
	-25 +85 ,
eClass	27061801
HS	85444290
Packaging unit	1
	CZ