

VALVE PLUG SUPPRESSOR FORM BI - 11MM 90°

Diode and LED, 24VDC/50VA/W

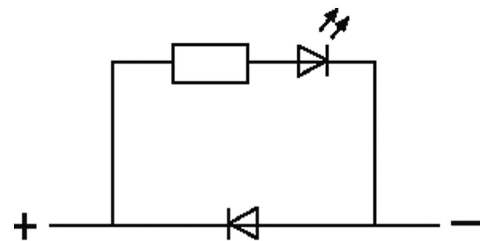
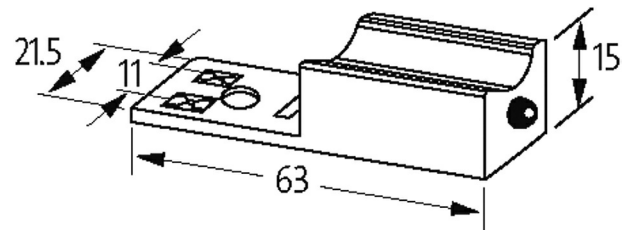
24 V DC

Diode + LED

Remove plug gasket when fitting adapter. Other LED colors on request.

Polarity dependent

Note PIN arrangement (PE at cable outlet of connector). 180° turned version on request.

[Link to Product](#)**Illustration****LED + Diode**

Product may differ from Image

Technical Data

Switch off delay time	max. 200 ms
Switch off peak	1 V
max. power (W)	max. 50 W (VA)
LED display	(yellow opac)

General data

Dimensions HxWxD	15x63x21.5 mm
Housing	Polyamide black, flame retardant, temperature resistance up to 130 °C

The information in this brochure has been compiled with the utmost care.
Liability for the correctness completeness and topicality of the information is restricted to gross negligence. Version: 05/21

Temperature range	-20...+60 °C
Material (contact)	Silvered bronze

Commercial data

country of origin	CZ
customs tariff number	85363010
EAN	4048879012072
eClass	27371013
Packaging unit	1