

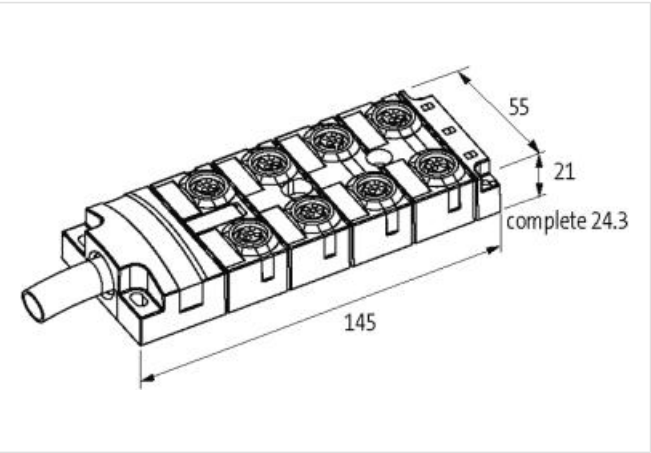
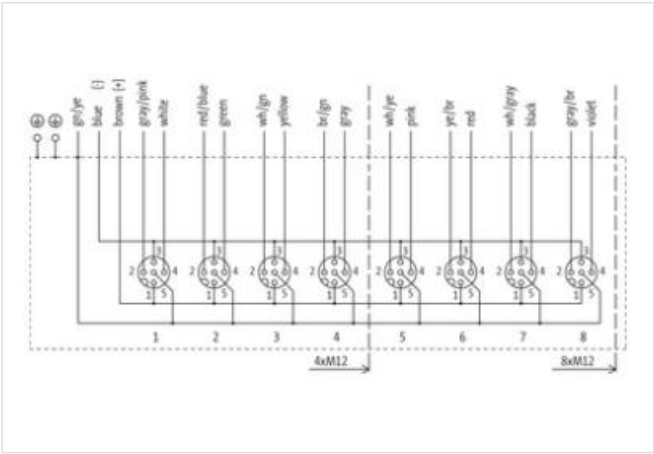
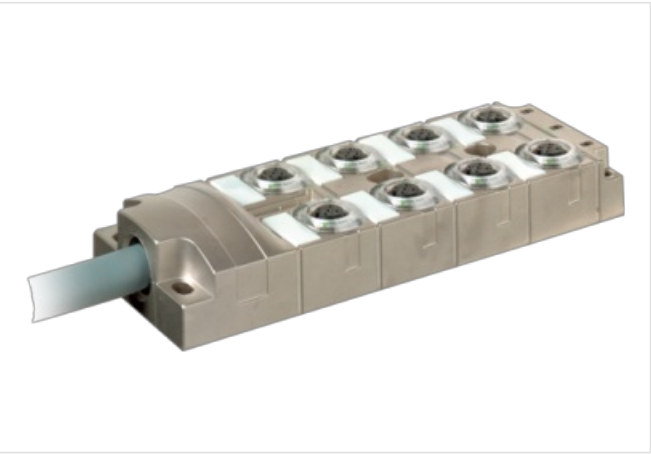
MVP-METALL, 8XM12, 5POLE, PRE-WIRED CABLE

10.0m PUR 16x0,5+3x1,0, UL/CSA

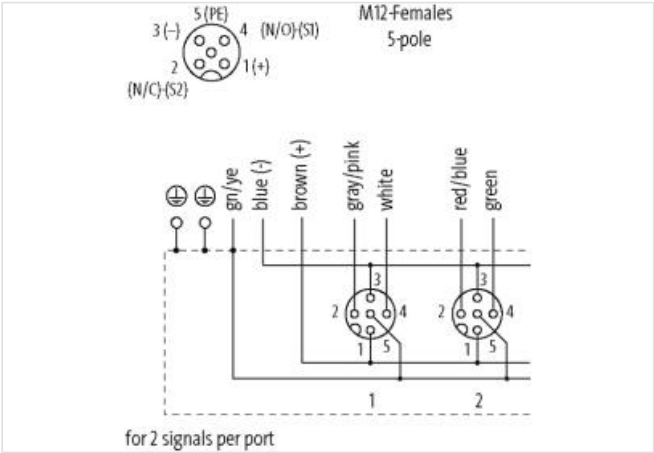
8-way, 5-pole  
Without LED for analog signals up to 48 V AC/DC  
10.0 m  
Further cable lengths on request.  
Replaces identical product (Art.No. 27498)

Link to Product

Illustration



Product may differ from Image



| Commercial data |          |
|-----------------|----------|
| ECLASS-6.0      | 27279219 |
| ECLASS-6.1      | 27279219 |
| ECLASS-7.0      | 27279219 |
| ECLASS-8.0      | 27279219 |
| ECLASS-9.0      | 27440108 |

|                       |               |
|-----------------------|---------------|
| ECLASS-10.1           | 27440108      |
| ECLASS-11.1           | 27440108      |
| ECLASS-12.0           | 27440108      |
| ETIM-5.0              | EC002585      |
| customs tariff number | 85444290      |
| GTIN                  | 4048879351980 |
| Packaging unit        | 1             |

**Electrical data | Supply**

|                                    |      |
|------------------------------------|------|
| Operating voltage AC max.          | 48 V |
| Operating voltage DC max.          | 48 V |
| Current operating per contact max. | 4 A  |

**Installation | Connection**

|              |         |
|--------------|---------|
| Mounting set | M12 x 1 |
|--------------|---------|

**Device protection | Electrical**

|                                     |                  |
|-------------------------------------|------------------|
| Degree of protection (EN IEC 60529) | IP65, IP67, IP68 |
|-------------------------------------|------------------|

**Mechanical data | Material data**

|                  |                  |
|------------------|------------------|
| Coating housing  | Nickel           |
| Material housing | Zinc die-casting |

**Mechanical data | Mounting data**

|                 |                |
|-----------------|----------------|
| Mounting method | Schraubgewinde |
|-----------------|----------------|

**Environmental characteristics | Climatic**

|  |                            |
|--|----------------------------|
| Operating temperature min.             | -25 °C                     |
| Operating temperature max.             | 90 °C                      |
| Additional condition temperature range | depending on cable quality |

**Installation | Cable**

|  |  |
|--|--|
| Cable identification                     | 452  |
| Jacket Color                             | gray   |
| Type of Certificate                      | cURus  |
| Amount stranding                         | 1  |
| Stranding                                | 7 wires around Core filler twisted   |
| Amount stranding (type 2)                | 1  |
| Stranding (type 2)                       | 12 wires counter-rotating twisted  |
| Banding                                  | Fleece   |
| Filler                                   | yes  |
| wire arrangement                         | gray-pink, brown-green, yellow, green-white, green, red-blue, white, (brown-gray, black, gray-white, red, brown-yellow, pink, yellow-white, gray, blue, brown, green-yellow, violet) |
| No. of bending cycles (C-track)          | 5 Mio. @ 25 °C   |
| Cable weight                             | 231 g/m  |
| Material jacket                          | PUR  |
| Shore hardness jacket                    | 94 ± 5 Shore A   |
| Freedom from ingredients (jacket)        | lead-free, cadmium-free, CFC-free, halogen-free  |
| Outer-diameter (jacket)                  | 11,5 mm  |
| Tolerance outer diameter (sheath)        | ± 5 %  |
| Material wire insulation                 | TPE-E  |
| Amount wires                             | 16   |
| Outer diameter insulation                | 1,6 mm   |
| Outer diameter tolerance core insulation | ± 5 %  |
| Shore hardness wire insulation           | 55 ± 5 Shore D   |
| Ingredient freeness wire insulation      | lead-free, CFC-free, halogen-free, silicone-free, LABS-free  |
| Amount strands (wire)                    | 64   |
| Diameter of single wires                 | 0,1 mm   |
| Conductor crosssection (wire)            | 0,5 mm <sup>2</sup>  |

|   |  |
|---|--|
| Material conductor wire                                 | Stranded copper wire, bare                           |
| Conductor type (wire)                                   | strand class 6                                       |
| Material wire insulation (Data)                         | TPE-E  |
| Outer diameter wire insulation (Data)                   | 2,1 mm   |
| Tolerance outer diameter wire insulation (data)         | ± 5 %  |
| Shore hardness wire insulation (Data)                   | 55 ± 5 Shore D                                       |
| Ingredient freeness wire insulation (Data)              | lead-free, halogen-free, silicone-free, LABS-free    |
| Amount wires (Data)                                     | 3  |
| Amount strands wire (Data)                              | 128  |
| Diameter of single wires (Data)                         | 0,1 mm   |
| Conductor crosssection wire (Data)                      | 1 mm <sup>2</sup>                                    |
| Material conductor wire (Data)                          | Stranded copper wire, bare                           |
| Wire conductor type (Data)                              | strand class 6                                       |
| Traversing distance (C-track)                           | 5 m @ 25 °C  |
| Current load capacity (standard)                        | to DIN VDE 0298-4                                    |
| Current load capacity min. wire                         | 5,9 A  |
| Current load capacity min. Wire (Data)                  | 15 A   |
| Electrical resistance line constant wire                | 39 Ω/km @ 20 °C                                      |
| Electrical resistance coating wire (Data)               | 20 Ω/km @ 20 °C                                      |
| Max. rated voltage power (conductor - ground)           | 300 V  |
| Max. rated voltage power (conductor - conductor)        | 300 V  |
| Power frequency withstand voltage power (wire - jacket) | 2 kV @ 60 s  |
| AC withstand voltage power (wire - wire)                | 2 kV @ 60 s  |
| Min. operating temperature (static)                     | -40 °C   |
| Max. operating temperature (fixed)                      | 90 °C  |
| Operating temperature min. (dynamic)                    | -20 °C   |
| Operating temperature max. (dynamic)                    | 90 °C  |
| Flame resistance  | UL 1581 § 1100 FT2   IEC 60332-2-2   UL 1581 § 1090  |
| chemical resistance                                     | Good, application-related testing                    |
| Gasoline resistance                                     | Good, application-related testing                    |
| Oil resistance  | Good, application-related testing   DIN EN 60811-404 |
| Bending radius (installation)                           | x Outer diameter                                     |
| Bending radius (fixed)                                  | 8 x Outer diameter                                   |
| Bending radius (dynamic)                                | 10 x Outer diameter                                  |

#### Connection type 2

|                          |                |
|--------------------------|----------------|
| Family construction form | free cable end |
| No. of poles             | 16             |
| Family construction form | M12            |
| Gender                   | female         |
| Color contact carrier    | black          |
| Coding                   | A              |
| No. of poles             | 5              |
| PIN 1                    | +              |
| PIN 2                    | NC S 2         |
| PIN 3                    | -              |
| PIN 4                    | NO S 1         |
| PIN 5                    | PE             |