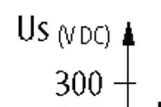
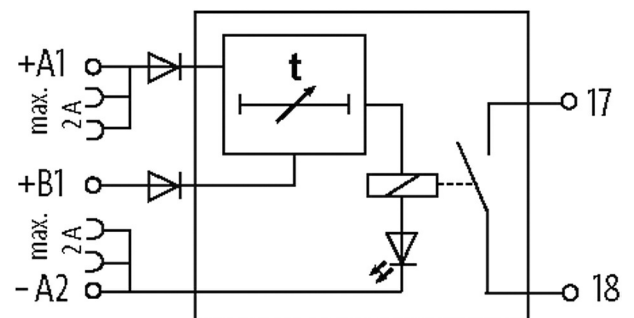
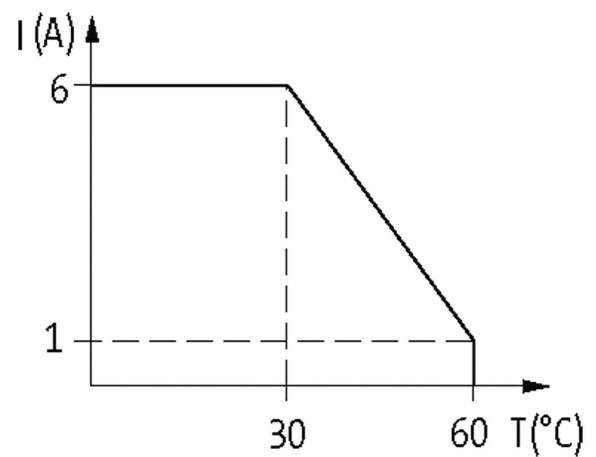
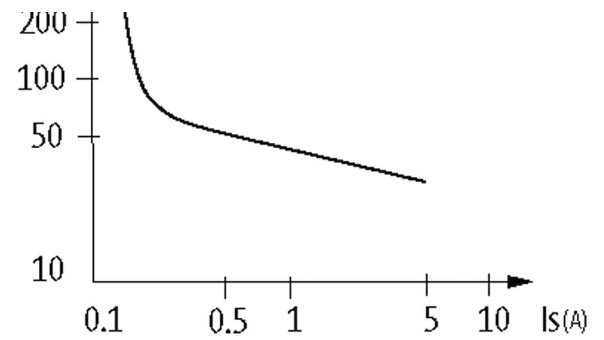


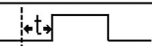
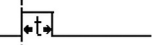
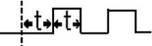
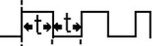
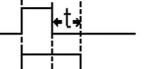
MIRO MULTI TIMER 24VDC-1S

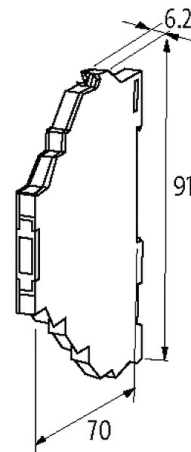
MIRO MULTI-TIMER 24VDC-1S

Relay output
 Impulse expansion: 0.1...300 s
 Spring clamp terminals

[Link to Product](#)
Illustration



Time	+A1	Function
0.1...1.2 s	Out 	Switch on delay
0.4...5 s	Out 	One shot
3.5...40 s	Out 	Modulation, pause starting
30...300 s	Load 	Modulation, pulse starting
	B1  Load	Switch off delay time



Product may differ from Image

Approvals



General data

Mech./ elect. life	20 000 000 switching cycles/load dependent
Test isolation voltage	4 kV; safe separation (EN 60947-1)
Mounting method	DIN-rail mountable (EN 60715)
Temperature range	-25...+60 °C
Dimensions HxWxD	91x6.2x70 mm

Output

Output voltage	max. 250 V AC/DC
Output current	max. 6 A
Min. load current	100 mA (12 V DC)

The information in this brochure has been compiled with the utmost care.
Liability for the correctness completeness and topicality of the information is restricted to gross negligence. Version: 04/21

Output rating	max. 1500 VA/120 W
Switching frequency	max. 10 Hz
Contact material	Ag Sn O2
Energize/release/contact bounce time	10/15/1.5 ms

Input

Input voltage	24 V DC (+10 -15%) input A
Input current	20 mA (input A)
Control voltage	24 V DC (+10 -15%) input B
Control current	5 mA (input B)

Commercial data

country of origin	CZ
customs tariff number	85364190
EAN	4048879021906
eClass	27371790
Packaging unit	1