

MPOT POTENTIOMETER MODULE

1K-Ohm/3600° /10 turn

10-turn potentiometer

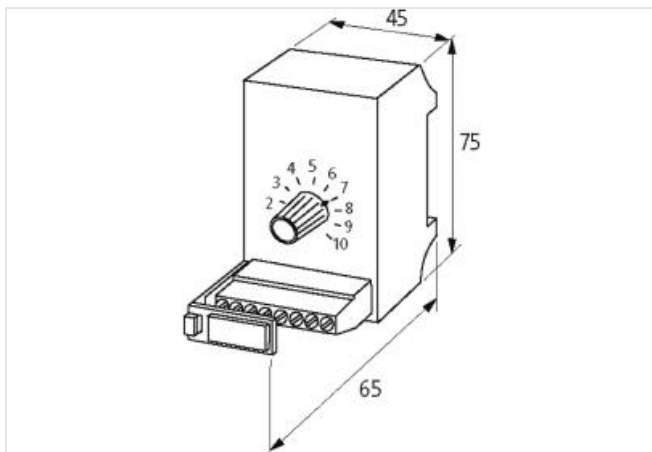
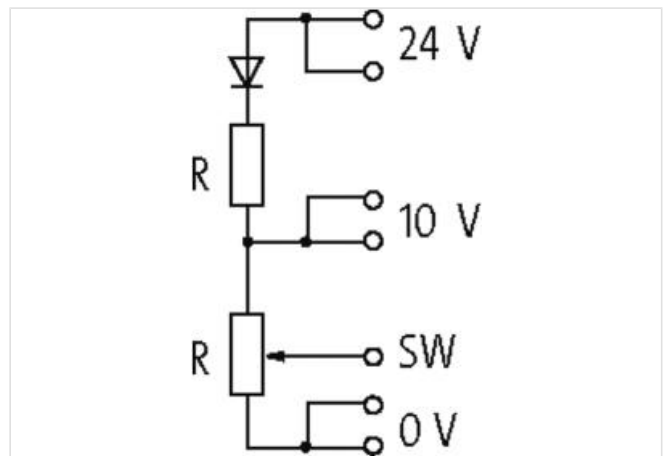
1 kΩ

The 10-turn potentiometer has a decimal scale and locking lever

The potentiometer modules are fitted with standard values. They are available as 270° potentiometer and as 10-turn potentiometer with fine adjustment. They can be operated with 10 V DC or 24 V DC. A resistor reduces the voltage so that a 24 V DC voltage can be reduced to operate between approx. 0...11 V. The connection is via terminals.

Link to Product

Illustration



Product may differ from Image

Commercial data

ECLASS-6.0	27371227
ECLASS-6.1	27371227
ECLASS-7.0	27371227
ECLASS-8.0	27371227
ECLASS-9.0	27371227
ECLASS-10.1	27371227
ECLASS-11.1	27371227
ECLASS-12.0	27371227
ETIM-5.0	EC001027

customs tariff number	85334010
GTIN	4048879041652
Packaging unit	1

Electrical data

Power max.	1,4 W
Linearity	±0,25 %
Resistance	1 kΩ
Resistance tolerance	5 %

Electrical data | Input

Power loss max.	0,25 W
-----------------	--------

Mechanical data | Mounting data

Mounting method	geschnappt
Suitable for mounting type	mounting rail, (EN 60715)
Height	75 mm
Width	45 mm
Depth	65 mm

Environmental characteristics | Climatic

Operating temperature min.	0 °C
Operating temperature max.	60 °C